



MATATIELE
LOCAL MUNICIPALITY

MATATIELE LOCAL MUNICIPALITY

Research and analysis of ward profiling: Ward based plans

WARD 17

May 2018

TSHANI
CONSULTING C.C.

Contents

1. Executive Summary of Ward4

2. Introduction.....4

3. Methodology4

4. Ward Overview.....5

5. Socio Economic Analysis5

6. Built Environment Assessment 12

7. Current Projects 15

8. Ward Needs and Priorities..... 15

9. Stakeholders within Ward..... 16

10. Social Challenges..... 16

List of Tables

Table 1: SWOT Analysis – Community Based Planning Program 2017 (Data Collection)5

Table 2: Major Event within the Ward – Community Based Planning Program 2017 (Data Collection).....5

Table 3: Programmes within the Ward – Community Based Planning Program 2017 (Data Collection)5

Table 4: Social Grant Dependency within Ward - Community Based Planning Program 2017 (Data Collection)7

Table 5: Child and Female Headed Households within the Ward - Census 20118

Table 6: Education Facilities within Ward - Community Based Planning Program 2017 (Data Collection)9

Table 7: Churches and Religious Organisations within the Ward - Community Based Planning Program 2017 (Data Collection) 10

Table 8: Health Care Facilities: Community Based Planning Program 2017 (Data Collection) 10

Table 9: Community Halls - Community Based Planning Program 2017 (Data Collection) 10

Table 10: Economic Activity - Community Based Planning Program 2017 (Data Collection) 11

Table 11: Agricultural Activities within the Ward - Community Based Planning Program 2017 (Data Collection) 12

Table 12: Products produced within the Ward- Community Based Planning Program 2017 (Data Collection) 12

Table 13: Existing Skills within the Ward: Community Based Planning Program 2017 (Data Collection) 12

Table 14: Access to water- Community Based Planning Program 2017 (Data Collection) 13

Table 15: Access to sanitation- Community Based Planning Program 2017 (Data Collection)..... 13

Table 16: Source of Energy used for Lighting within the Ward - Census 2011 14

Table 17: Roads and Bridges within the Ward- Community Based Planning Program 2017 (Data Collection) 15

Table 18: Current Projects within the Ward- Community Based Planning Program 2017 (Data Collection) . 15

Table 19: Wards Needs and Priorities within the Ward- Community Based Planning Program 2017 (Data Collection) 15

Table 20: Top 10 Wards Needs and Priorities within the Ward- Community Based Planning Program 2017 (Data Collection) 15

Table 21: Stakeholder within Ward– Community Based Planning Program 2017 (Data Collection) 16

Table 22: Social Challenges within ward- Community Based Planning Program 2017 (Data Collection) 16

List of Figures

Figure 1: Gender Distribution6

Figure 2: Age within Ward Distribution – Census 20117

Figure 3: Language distribution- Census 20117

Figure 4: Types of Dwelling within Ward – Census 20119

Figure 5: Individual Monthly Income - Census 2011 11

Figure 6: Access to Sanitation Facilities – Census 2011 14

List of Plans

Plan 1: Health Care Facilities..... 10

Plan 2: Other Social Facilities 11

Plan 3: Household with Access to Waste Removal - Census 2011 13

Plan 4: Households using electricity for Lighting within the Ward - Census 2011 14

Plan 5: Roads and Bridges within the Ward - MLM GIS 15

1. Executive Summary of Ward

Ward 17 is situated in the eastern part of the heart of Matatiele Local Municipality (MLM). The Ward is surrounded by wards 10, 15, 18, and 23. It comprises of the following Villages Mgubo, Mbizeni, Nkalweni, Luxeni, Lugada, Sigoga, Mango, Polile and Nyanzela. The total population of Ward 17 is estimated at 10800, as per *ward based plan programme 2017 (Data Collection)* the number of households consist of 2720. The most spoken language in Ward 17 is isiXhosa, it is by far the most spoken language in Ward 17 followed by seSotho. The gender split within Ward 17 is made up of 52% female and 48% males.

The population of this ward is dominated by younger people 15-19. There seem to be an incline in ages between 00-19 years, and a sudden decline in in ages between ages 20 years and older.

There are two health care facilities within the ward. First one is Mt Hargreaves Clinic in Sigoga Village, providing primary health care services. The second one is a Mobile clinic in Mango and Nyanzela providing health care services such as family planning, basic check-ups and immunization among others. Ward 17 has two (2) community halls in Lugada (KwaBhuzi Community Hall) and Luxeni.

As per the Community Based Plan Programme 2017 (Data Collection) the main source of energy within Ward 17 is electricity. This indicates that the level of service within the ward is relatively high. All villages have are electrified however the whole ward need electricity infill's. In terms of water and sanitation, the District Municipality (ANDM) currently provides water and sanitation to Matatiele Local Municipality area. Out of ten villages only one village has no access to water which is Upper Sigoga, this indicates that the level of service within the ward is relatively high. Even though some villages have access to community taps the water does not come out at times as a results a large number of people have to walk at least 1km away to source water from the dams or streams.



2. Introduction

The Matatiele Local Municipality (MLM) appointed Tshani Consulting CC for the analysis and ward profiling for the 26 wards within MLM. The report serves as the analysis and profiling of Ward 17.

The purpose of this report is to review the current the Ward Based Plan prepared for Ward 17 and the LM that was developed in 2014. Through this exercise the ward profiling ensures the prioritisation of projects and channelling such projects into places of need.

The report serves as the analysis and profiling of Ward 17.

2.1. Locality

Ward 17 is situated in the eastern part of the heart of Matatiele Local Municipality (MLM). The Ward is surrounded by wards 10, 15, 18, and 23.

3. Methodology

The methodology utilised for the analysis and profiling in this report was derived as follows:

1. Synthesis an interpretation of questionnaires and community feedback;
2. Translated information into a Strength, Weakness, Opportunities and Threats analysis;
3. Conducted a verification process on the populations' profiles, social profile and economic profile using Census 2011 data which was conducted at a Ward level;
4. A detailed GIS mapping exercise was completed in order to translate the findings into spatially represented outcomes;
5. Ward needs, and priorities were identified for the wards;
6. Needs identified for the wards were translated into projects and a consolidated implementation plan together within financial implications was completed.

The analysis of ward 17 also took its 'point of departure' from the primary data which was available from the data collection and community consultation completed in the previous phase

4. Ward Overview

The section below highlights the specific sections which were analysed in relation to ward 17.

4.1. SWOT Analysis

The SWOT analysis below was developed through a series of engagement session with the local community and traditional leadership of Ward 17:-

STRENGTHS	WEAKNESSES
<ul style="list-style-type: none"> • Livestock • Growing youthful population • Rivers • Skilled people 	<ul style="list-style-type: none"> • Poor access roads • Misuse of natural resources: sand and gravel stone • Lack of funds for agricultural activities • High unemployment
OPPORTUNITIES	THREATS
<ul style="list-style-type: none"> • Live Stock fields • Ploughing fields • Agricultural Space • Building blocks • SMME'S 	<ul style="list-style-type: none"> • Drought • Pollution • Stock theft • House breakings • HIV/AIDS

Table 1: SWOT Analysis – Community Based Planning Program 2017 (Data Collection)

4.2. Major events within the Ward

The table below illustrates the major events which have taken place in Ward 17 in 2012. The ward has experienced a major strike which resulted in damage of roads and houses.

EVENT/ OCCURRENCE	YEAR	IMPACT
Road were closed due to Strike	2012	Damaged of the Road and houses
Rejecting or disowning of indigent services.	2012	It lead to throwing of stoves, gel in ward councillor's house

Table 2: Major Event within the Ward – Community Based Planning Program 2017 (Data Collection)

4.3. Services/ Infrastructure and Programmes Within the Ward Within The 5-Year Period (2012-2016)

Ward 17 has experienced a reasonable amount of infrastructure investment in the 2011-2014 period. These projects have benefited the ward as well as the municipality as a whole.

Type	Year	Beneficiaries	Status / present condition	Impact
Electricity	2013	Four Villages: <ul style="list-style-type: none"> • Mgubo • Nkalweni • Nyanzela • Embizeni 	Good	Households have been electrified and this improved lives of the residents
Toilets	2011	Four Villages: <ul style="list-style-type: none"> • Mgubo • Nkalweni • Nyanzela • Mbizeni 	Toilets were done but infills are needed in some villages in the Ward	Provision of toilets has improved the dignity of the residents
Boreholes	2013	Four villages: <ul style="list-style-type: none"> • Luganda • Nyanzela • Polile • Nkalweni 	Good condition but found to have a challenge of engines	Provided access to water in the ward. However the water supply is irregular
Access Road	2013	One Village: <ul style="list-style-type: none"> • Nyanzela 	Fair condition	Has provided easy access into village
Dipping tank	2014	One Village: <ul style="list-style-type: none"> • Sigoga 	Good condition	Assists livestock owners within the village

Table 3: Programmes within the Ward – Community Based Planning Program 2017 (Data Collection)

5. Socio Economic Analysis

5.1. Population Profile

The section below provides an analysis of the population profile of ward 17.

5.1.1. Population Size and Distribution

The total population of Ward 17 is 10 800

LIST OF VILLAGES/ LOCATIONS/SUB AREAS	OTHER NAME/S FOR THE VILLAGE/ LOCATION	NUMBER OF HOUSEHOLDS			POPULATION SIZE (NUMBER OF PEOPLE)		
		Community Feedback	Census 2011	Projected Household by 2050 growing at 0.3% Per Annum	Community Feedback	Census 2011	Projected Population by 2050 growing at 2% Per Annum
Mgubo	N/A	350	144		2078	510	
Mbizeni	N/A	201	168		927	687	
Nkalweni	N/A	127	90		632	336	
Luxeni	N/A	209	309		417	1146	
Lugada	N/A	337	330		1870	1230	
Sigoga	Kwangwe/ Mt Hargreaves	253			717		
Mango	N/A	815			2987		
Polile	N/A	185	297		637		
Nyazela	Ntlazibeni	243			535		
Total Population - Ward 17:	N/A	2720	8511	9671	10 800	2199	2427

Table 4: Population Size and Distribution within the Ward – Community Based Planning Program 2017 (Data Collection)



5.1.2. Gender Distribution

The chart below illustrates that 52% of the total population of Ward 17 is made up of by females. The growing distribution of females within the ward necessitates the provision of support for increased fertility demands and maternal support.

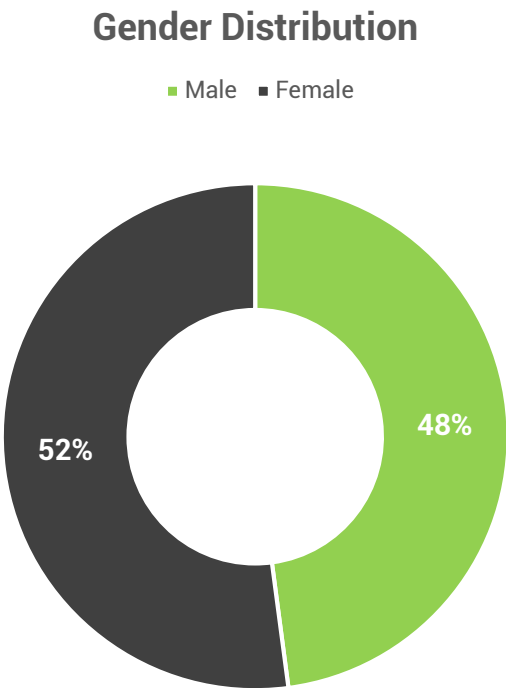


Figure 1: Gender Distribution

5.1.3. Age

The population of this ward is dominated by younger people 15-19. There seem to be an incline in ages between 00-19 years, and a sudden decline in in ages between ages 20 years and older. This community certainly needs to invest more in job employment opportunities in order to attend to the needs of the youthful population.

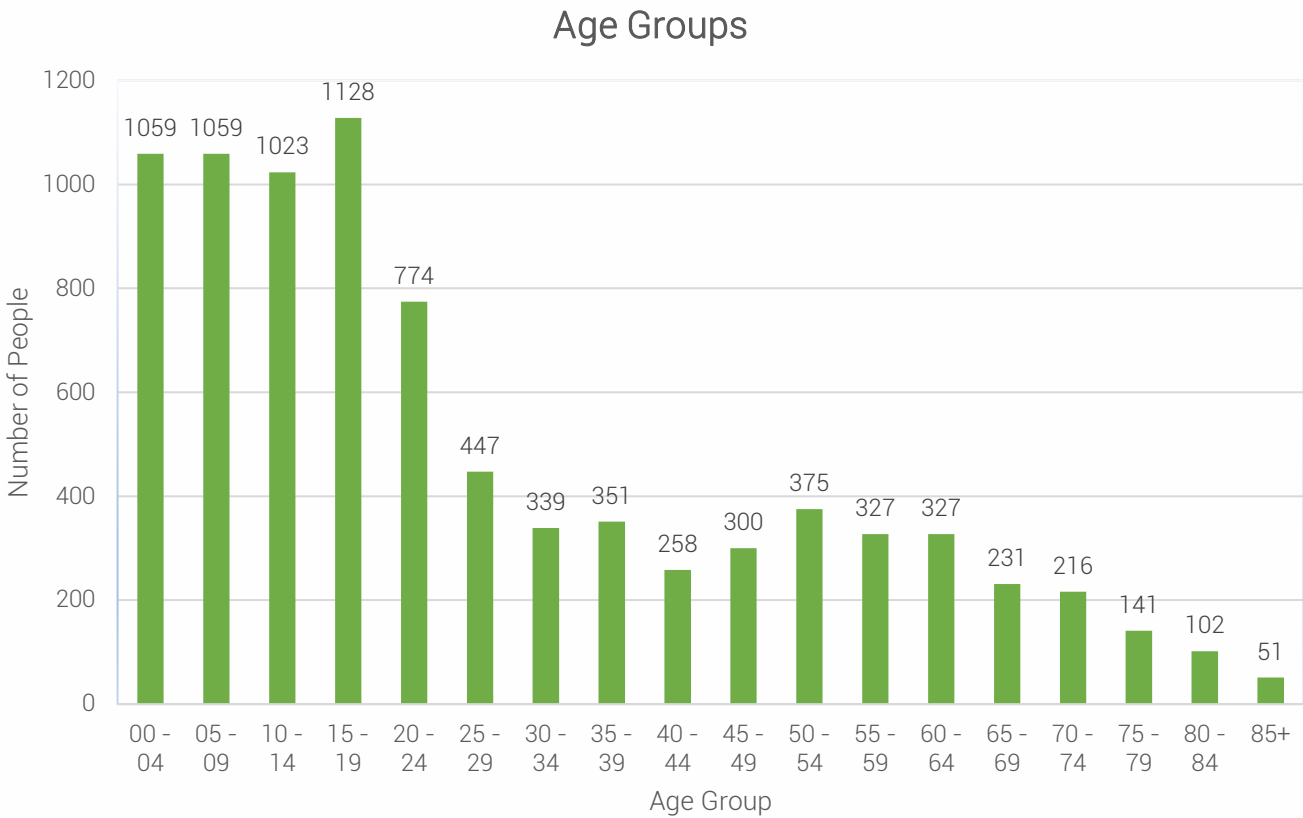


Figure 2: Age within Ward Distribution – Census 2011

5.1.4. Language Distribution

According to the figure illustrated below, isiXhosa is by far the most spoken language in Ward 17 followed by Sesotho.

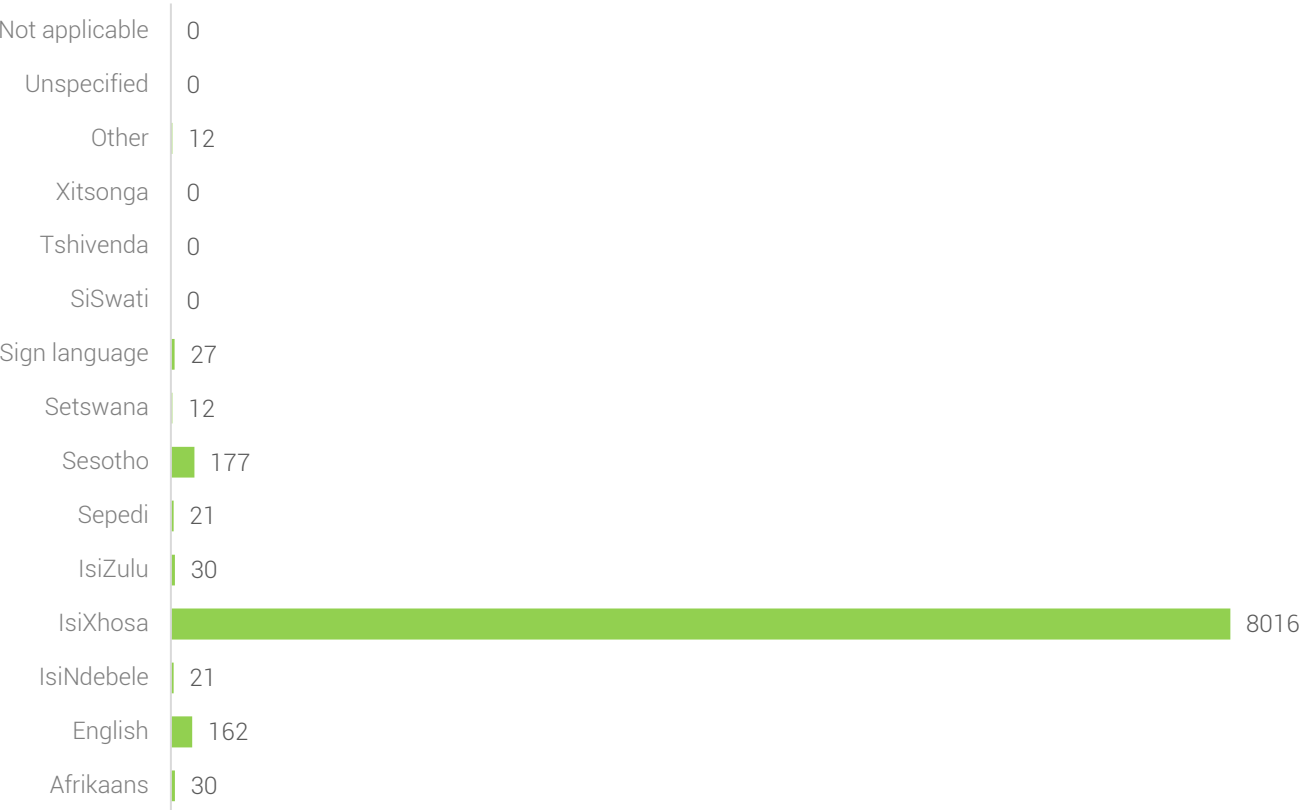


Figure 3: Language distribution- Census 2011

5.1.5. Social Grants

There are two types of social assistance provided in ward 17, namely, social grants and fool parcels. The number of people receiving social grant is 4593 and 130 people receiving food Parcel parcels.

TYPE OF SOCIAL ASSISTANCE OFFERED	NUMBER OF HOUSEHOLDS
	Community Feedback
Social Grant	4593
Food Parcel	130

Table 4: Social Grant Dependency within Ward - Community Based Planning Program 2017 (Data Collection)



5.1.6. Indigent Support

A rural municipality with a high dependency rate on social assistance; MLM has a large number of indigent households. Particularly for this ward 17. There is a large number of indigent households. Although the number is high, it is only a few households that receive indigent supports from the municipality. The challenges that affect the provision of such support, include beneficiaries with no properly documents, challenges with verification of beneficiaries amongst other issues. The current indigent support register show that only 571 beneficiaries registered in this ward.



5.2 Household Profile

The section below details the nature of households within Ward 17 in terms of the sizes, gender of heads and distribution.

5.2.1. Average Household Size

The household size in ward 17 shows an average of 4 persons per household.

5.2.2. Heads of Households

The table below illustrates the number of households headed by children and females:-

Villages	Child-Headed households		Female-Headed Households	
	Community Feedback	Census 2011	Community Feedback	Census 2011
Mgubo	20		50	
Mbizeni	4		47	
Nyazela	6		55	
Nkalweni	4		42	
Mango	13		85	
Luxeni	10		35	
Sigoga	5		48	
Lugada	13		78	

Polile	2		46	
Total	77		486	

Table 5: Child and Female Headed Households within the Ward - Census 2011



As illustrated in the graph below, approximately 53% of households in ward 17 are headed by women (females).

Gender of Household Head

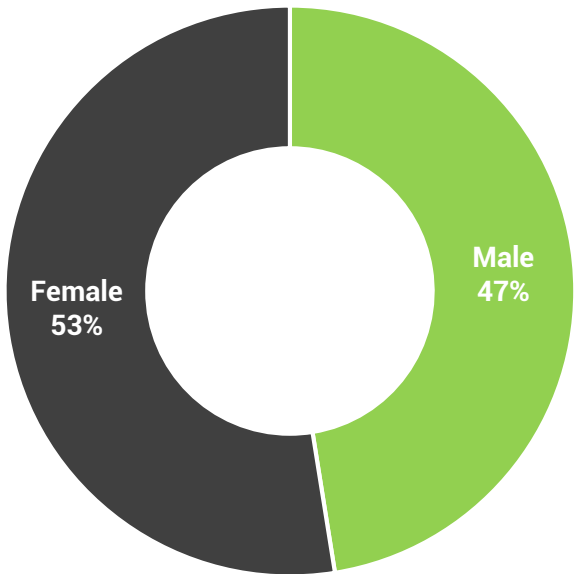


Figure 4: Gender of Household Head - Census 2011

5.2.3. Household Dwelling types

The majority of people in Ward 17 live in a Traditional dwelling/hut/structure made of traditional structures.

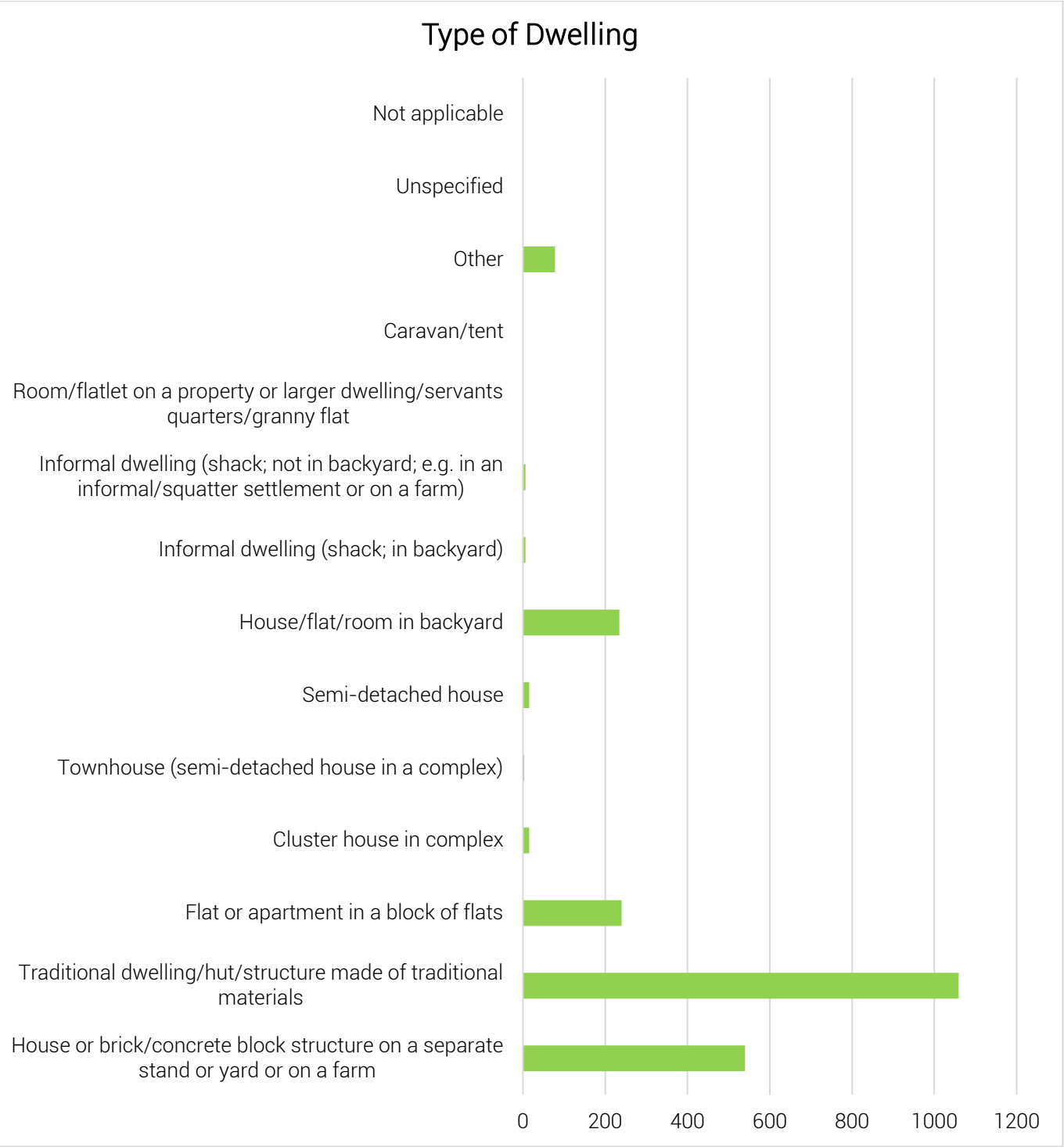


Figure 4: Types of Dwelling within Ward – Census 2011

5.3. Social Profile

5.3.1. Education Facilities: Community Feedback

The table below illustrates the schools found within ward 17

NAME	TYPE	AREA LOCATED	NUMBER OF LEARNERS
Mt Hargreaves	Secondary School	Sigoga	310
Phumelele	Secondary School	Embizeni	550
Mango	Primary School	Mango	325
Mpumalanga	Primary School	Mgubo	133
Lugada	Primary School	Lugada	219
Mt Hargreaves	Primary School	Sigoga	185
Embizeni	Primary School	Embizeni	140
Sibongile	Primary School	Luxeni	150
Msi	Primary School	Mgubo	138
Mputhekani	Primary School	Nyanzela	191
Nkalweni	Primary School	Nkalweni	180

Table 6: Education Facilities within Ward - Community Based Planning Program 2017 (Data Collection)

5.3.2. Churches and Religious Organisations: Community Feedback

The range of religious facilities identified in the table below was developed from the community feedback sessions. These facilities are well spread out across the Ward. *Some of the churches do not have the structures, as they operate within the households*

NAME	LOCATION/AREA	NUMBER
Methodist	Mgubo,Mango,Sigoga,Luxeni, Polile and Nkalweni	6
Polile and Nkalweni	Embizeni,Nyanzela and Mgubo	3
Roman Catholic Church	Embizeni,Nyanzela and Mgubo	3
Presbyterian (Rhabe)	Mango and Lugada	2
Apostolic Church	Sigoga and Mango	2
Anglican Church	Mango and Embizeni	4
Zion Catholic Church	Luxeni,Mango,Lugda and Mgubo	4
Moravian Church	Sigoga,Mbizeni,Mgubo,Mango and Nkalweni	5
Faith Mission	Lugada,Luxeni and Lugada	3
African Gospel	Lugada	1

Apostolic faith mission	Mango,Nyanzela,Lugada and Mgubo	4
Angle	Lugada	1
Emie	Luxeni	1
Assembly of God	Luxeni and Lugada	2
Shembe	Lugada	2
Mkhumbi ka Nowa	Polile and Lugada	1

Table 7: Churches and Religious Organisations within the Ward - Community Based Planning Program 2017 (Data Collection)

5.3.3. Health Care Facilities: Community Feedback

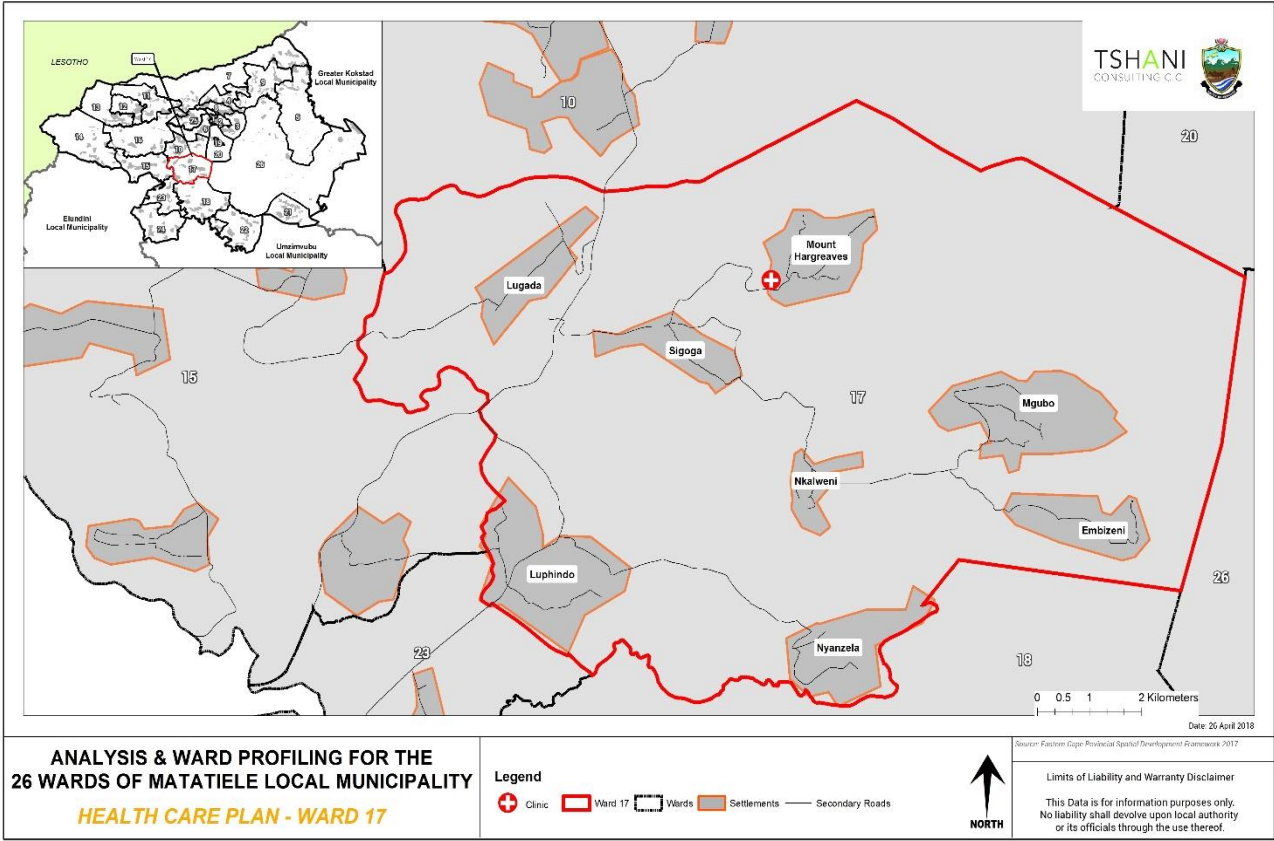
There are two health care facilities in ward 17. First one is Mt Hargreaves Clinic in Sigoga village, proving primary health care services. The second one is a mobile clinic in Mango village, providing primary health services.

Name and type	Area located	Primary services provided
Mt Hargreaves clinic	Sigoga	Community clinic and Maternity service
Mobile Clinic	Mango, Nyanzela	Providing treatment

Table 8: Health Care Facilities: Community Based Planning Program 2017 (Data Collection)

5.3.4. Health Care Facilities

The map below spatially identified the clinic which is located just in the boundary of Ward 17.



Plan 1: Health Care Facilities

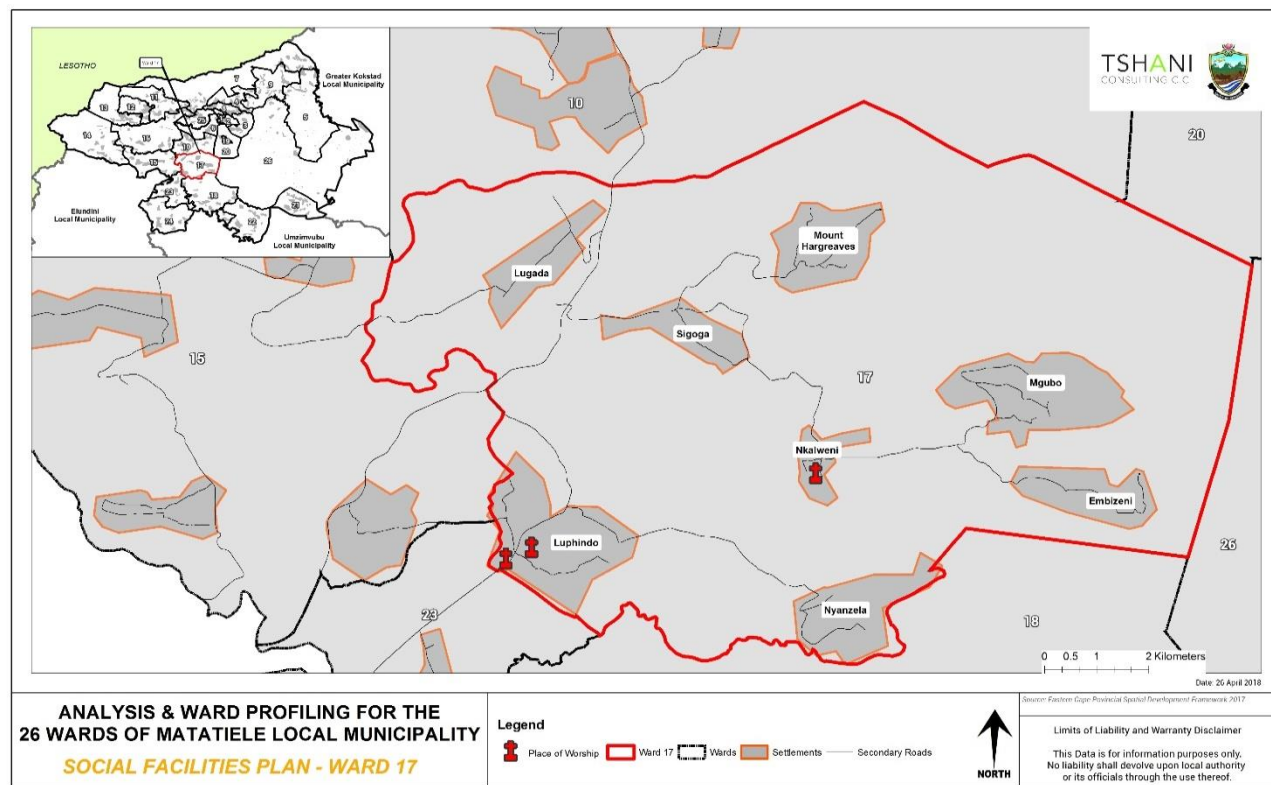
5.3.5. Community Hall: Community Feedback

NAME AND TYPE	AREA LOCATED
KwaBhuzi Community Hall	Lugada
Luxeni Community Hall	Luxeni

Table 9: Community Halls - Community Based Planning Program 2017 (Data Collection)

5.3.6. Other Social Facilities

The map below illustrates places of worship in ward 17.



Plan 2: Other Social Facilities

5.4. Economic Profile

5.4.1. Individual Monthly Income

Over half of the population of ward 17 receives less than R400 or no income monthly. This community has low income earners.



Figure 5: Individual Monthly Income - Census 2011

5.4.2. Economic Activities: Community Feedback

It is noted that Spaza shops are the most dominant form of shops in ward 17. Nine (9) facilities which retail alcoholic beverages were noted within the Ward. This is very typical of areas with a very high unemployment rate and youth.

RETAIL(INDICATE SHOPS, SPAZA SHOPS, CAFÉ, TARVENS, SALONS, ETC)	
TYPE	LOCATION
Spaza 3,Tarven 1	Nkalweni
Shops 2, Spaza 2, Tarven 1	Embizeni
Shop 5, Tavern 1, Spaza3	Mgubo
Shop 2, Tavern 1, Spaza1	Nyanzela
Shop1	Polile
Spaza3, Shop2	Luxeni
Tarvern1, Spaza 3, Shop1	Lugada
Spaza4, Tarvern1	Sigoga
Tarvern4, Spaza2, Shop 4	Mango

Table 10: Economic Activity - Community Based Planning Program 2017 (Data Collection)

5.4.3. Tourism Activities

The community feedback has shown that there are no tourism activities taking place in Ward 17.

5.4.4. Agricultural Activities

The community of ward 17 practises both commercial and subsistence farming for their agricultural products.

TYPE	ACTIVITY IN HOUSEHOLDS	ACTIVITY IN FARM
Cattle	Yes	
Sheep	Yes	yes
Goats	Yes	
Horses	Yes	
Poultry	yes	
Vegetables	Yes	yes
Fruits	Yes	
Grains	Yes	

Table 11: Agricultural Activities within the Ward - Community Based Planning Program 2017 (Data Collection)

5.4.5. Products Produced in Wards

The table below illustrates that products such as traditional clothing and crafts are available within the ward that are locally produced. Such individuals responsible for these activities should be better supported and encouraged to expand their products for bigger markets.

TYPE OF PRODUCTS	AREAS / VILLAGES	FOR HOUSEHOLD CONSUMPTION	FOR SELLING TO THE COMMUNITY
Beans	Embizeni		yes
Grain(Maize)	Embizeni Mgubo Mango	yes	yes
Vegetables	Embizeni Mango Sigoga		yes
Clothing	Mgubo Sigoga Mango		yes
Crafts	Mango		yes
Net wire	Lugada		yes

Table 12: Products produced within the Ward- Community Based Planning Program 2017 (Data Collection)

5.4.6. Existing Skills

The ward constitutes of some diverse skills which is a major asset for the ward. Such individuals need to be further trained and opportunities to mentor other unemployed individuals within the community should be encouraged. The entrepreneurs within ward should also be given better access to market opportunities. There a broad range of professionally qualified individuals whom also are major assets for Ward 17.

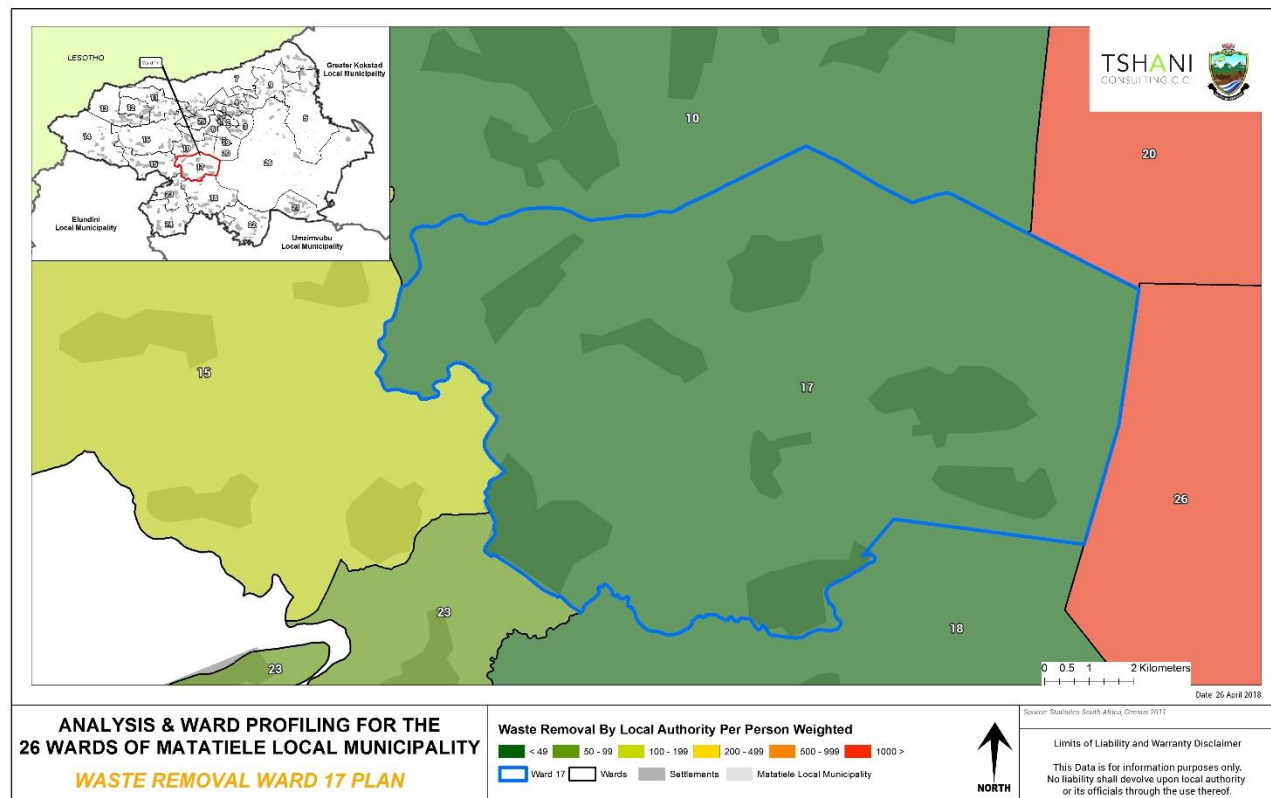
TYPE OF SKILLS	EXISTING (INDICATE WITH YES/NO)	TYPE OF SKILLS	EXISTING (INDICATE WITH YES/NO)
Carpenters	Yes	Pottery	Yes
Plumbing	Yes	teachers	Yes
Builders	Yes	police	Yes
Artists	No	Health officials	Yes
Gardening	Yes	accountants	Yes
cooking	Yes	engineers	Yes
sewing	Yes	lawyers	Yes
writing	No	Other (indicate)	
drivers	Yes		
farmers	Yes		

Table 13: Existing Skills within the Ward: Community Based Planning Program 2017 (Data Collection)

6. Built Environment Assessment

6.1. Household Access to Waste Removal

The Municipality does not provide the waste collection removal in this ward, hence ward 17 people dispose their own waste.



Plan 3: Household with Access to Waste Removal - Census 2011

6.2. Household Access to Water

The main supplier of water is the District Municipality (ANDM) which currently provides water to Matatiele area, out of ten villages that have access to community taps and only one (1) village has no access to water as a results the Upper Sigoga village walk at least 1km away to source water from the dams or streams *as shown below table*. Even though some villages have access to community taps the water does not come out at times as a results a large number of people have to walk at least 1km away to source water from the dams or streams.

VILLAGE/LOCATION	COMMUNITY TAPS	WATER-INSIDE YARD	WATER-INSIDE HOUSE	BOREHOLES	DRAW WATER FROM STREAMS, DAMS, RIVER
Mgubo	10			5	
Mbizeni	14				Stream
Nkalweni	6	1			
Luxeni	10			2	Stream
Lugada	4	1		6	Stream
Upper Sigoga					Stream
Lower Sigoga	10				Stream
Polile	2	2		1	Stream
Mango	2	3			Stream
Nyanzela	5			1	Stream

Table 14: Access to water- Community Based Planning Program 2017 (Data Collection)

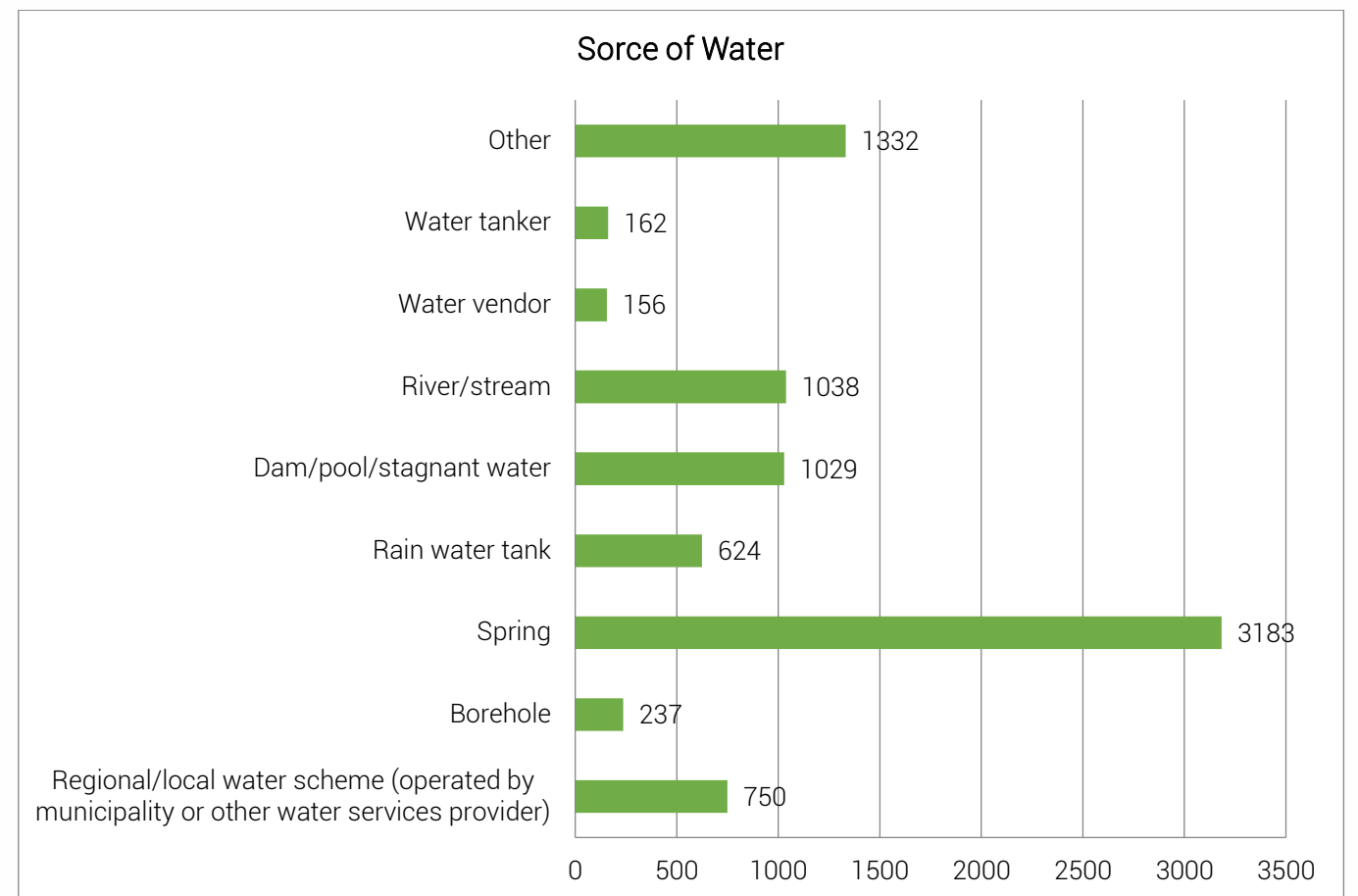


Figure 10: Source of Water supply within the Ward - Community Based Planning Program 2017 (Data Collection)

6.3. Household Access to Sanitation

As per the Community Based Plan Programme 2017 (Data Collection) A very significant number of people use pit latrine toilets (with and without ventilation). The table below illustrates only five villages have access to sanitation and the other five (5) villages have no access to sanitation this shows that there is a large backlog with regards the provision of Sanitation in this ward.

VILLAGE/LOCATION	VENTILATED PIT TOILETS	FLUSH TOILETS	Other
Mango	Yes		
Nyanzela	Yes		
Mgubo	Yes		
Embizeni	Yes		
Nkalweni	Yes		

Table 15: Access to sanitation- Community Based Planning Program 2017 (Data Collection)

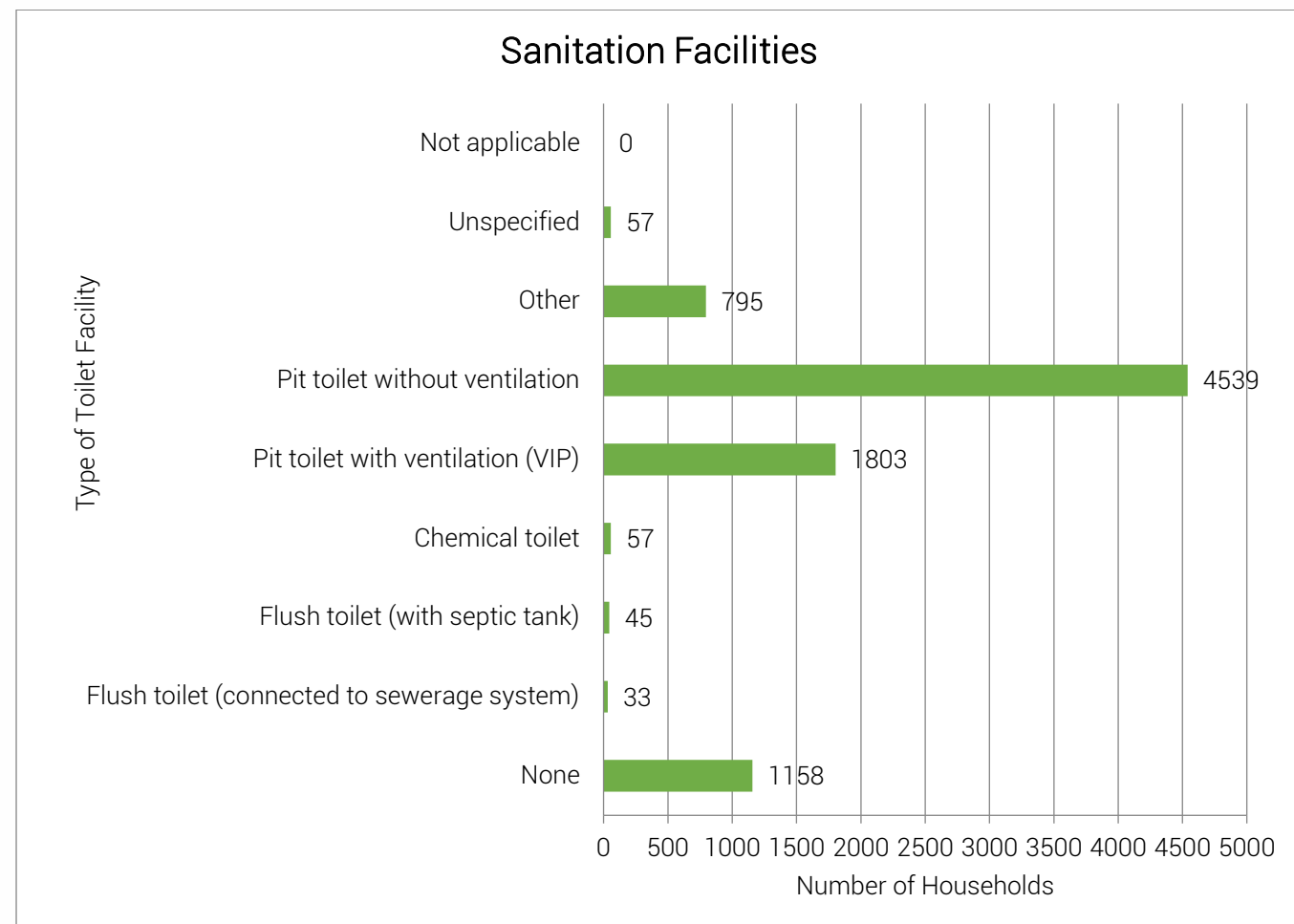


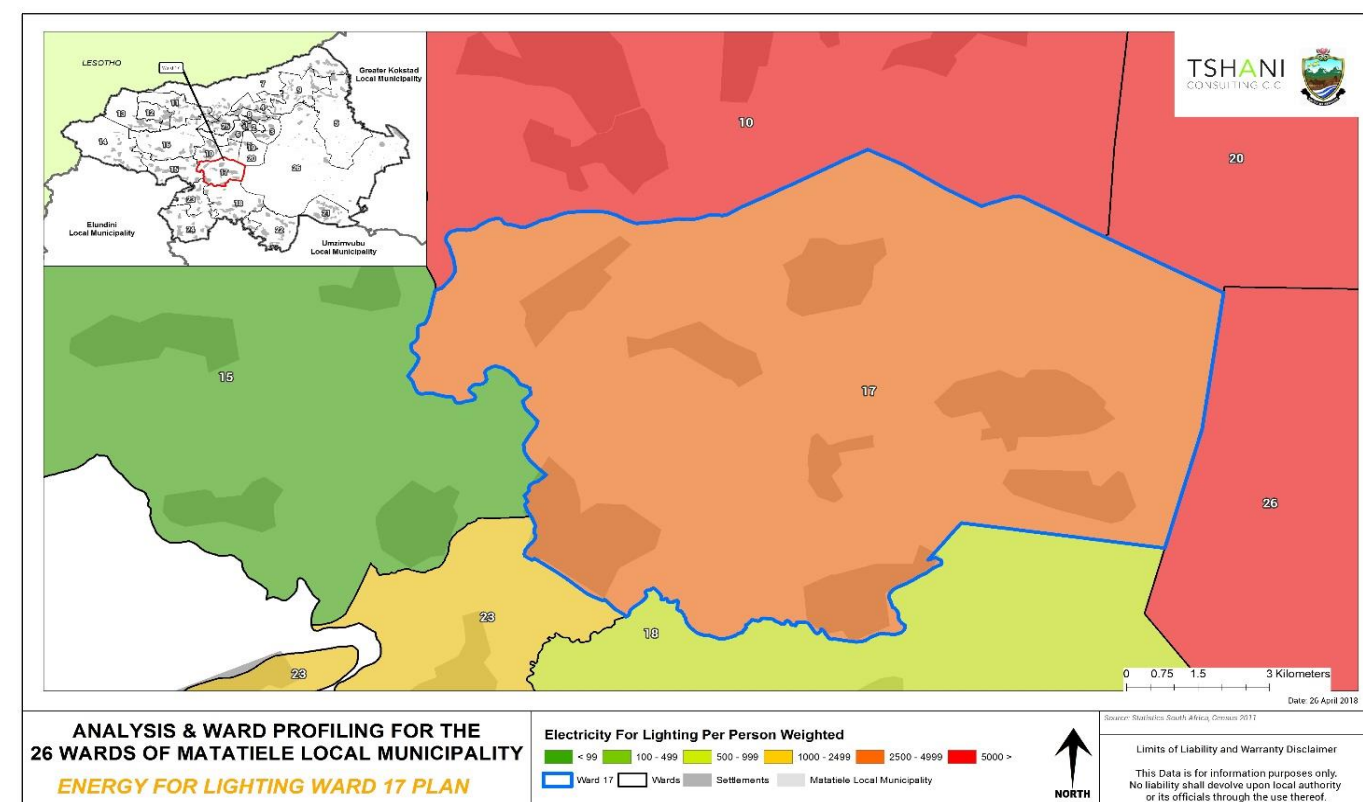
Figure 6: Access to Sanitation Facilities – Census 2011

6.4. Main Source of Energy

As per the *Community Based Plan Programme 2017 (Data Collection)* the main source of energy within the ward17 is Electricity. All villages within ward 17 have access to electricity, this indicates that the level of service within the ward is relatively high. The map figure below illustrates the main source of energy for lighting in ward 17

VILLAGE/LOCATION	ELECTRICITY	SOLAR	NO ELECTRICITY/SOLAR
Mgubo	Yes		
Nkalweni	Yes		
Mbizeni	Yes		
Luxeni	Yes		
Sigoga	Yes		
Lugada	Yes		
Mango	Yes		
Polile	Yes		
Nyanzela	Yes		

Table 16: Source of Energy used for Lighting within the Ward - Census 2011



Plan 4: Households using electricity for Lighting within the Ward - Census 2011

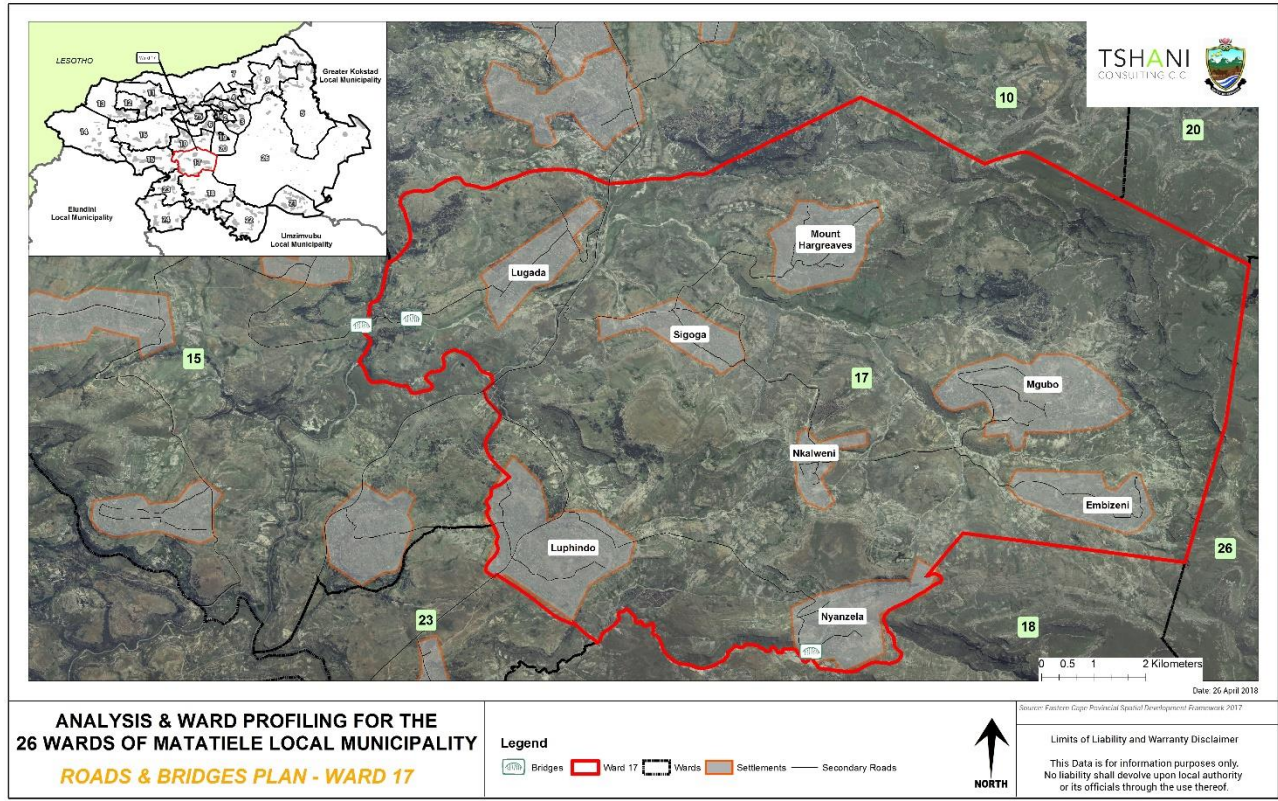
6.5. Roads and Bridges

There are few roads infrastructure identified in ward, approximately 8 of them in total. However, there are no bridges within found ward 17. These road infrastructure facilities are in bad conditions and require maintenance. The table below illustrates the roads networks which are found in ward 17:-

NAME AND TYPE	AREAS COVERED	CONDITION OF THE ROADS
Mango- Polile access road	Mango and polile	The road is in a very bad condition, needs maintenance
Nyanzela access road	Nyanzela/Ntlazibevi	Virgin road, road from Mango to S.P.S is in a bad condition
Nkalweni access road	Nkalweni	The road is in a bad condition, needs maintenance
Embizeni access road	Embizeni	The road is in a bad condition, needs maintenance
Mgubo access road	Mgubo	The road is in a bad condition, needs maintenance

Luxeni access road	Luxeni	The road is in a bad condition, needs maintenance
--------------------	--------	---

Table 17: Roads and Bridges within the Ward- Community Based Planning Program 2017 (Data Collection)



Plan 5: Roads and Bridges within the Ward - MLM GIS

7. Current Projects

In terms of the current projects being rolled out there are no specifics on the projects' type and status. The table below illustrates the projects which have been identified within ward 17.

No	PROJECT/PROGRAMME NAME	STATUS	WHO IS RESPONSIBLE
1.	Solangomso/Embizeni		Mr Mtshazo
2.	Vukani mahlubi/Mango		Lupindo-Mabutyana
3.	Mango farmers/Mango		Makhamba
4.	Solusiwe/Nkalweni		Mr Yotwana

Table 18: Current Projects within the Ward- Community Based Planning Program 2017 (Data Collection)

8. Ward Needs and Priorities

The study conducted has identified the needs and priorities at a ward level. These Needs and Priorities must be incorporated into the Municipal SDF and other Municipal Local Area Plans in order to be implemented. The table below illustrates the needs and priorities for ward 17.

VILLAGE/LOCATION/SUB AREA	NEEDS IDENTIFIED
Mgubo	Foot bridge eDwaleni, Dipping tank, Maintenance of Mgubo access road, RDP Houses
Mbizeni	Maintenance of access road and bridge, Water, RDP Houses, assistance with fencing of crop fields. Assistance with the forestry project
Nkalweni	RDP houses, Network connection (for mobile devices), Preschool. Access road
Luxeni	Water-additional taps needed. Electricity infills, RDP houses, Toilets, Preschool, mobile clinic to come to the village.
Lugada	Electricity kwaNqodi. Toilets, water, electricity infills. Access road, RDP houses, Dipping tank, sports field, fencing of crop fields. Foot bridge crossing at Kinira for from Lugada.
Sigoga village	New access road from Sigoga to Silwani. Toilets, water, access road, RDP houses, Preschool, community hall, sports ground
Mango	Community hall, RDP houses, Electricity, Clinic, Access road maintenance from Mango to Nyanzela to Polile, A Multipurpose sport ground, water, Network connection (for mobile devices).
Polile	Access road, water, toilets.
Nyanzela	Nyanzela to Mango access road, water, preschool, shearing shed, RDP houses, community Hall.

Table 19: Wards Needs and Priorities within the Ward- Community Based Planning Program 2017 (Data Collection)

WARD 17	
INFRASTRUCTURE PRIORITIES	SOCIO- ECONOMIC PRIORITIES
1. Water and Sanitation	1. Pre-schools
2. Electricity	2. Fencing of Fields
3. Network connection (for areas without access)	3. Dipping tanks
4. Access roads	4. sports fields
5. RDP House	5. Clinic services

Table 20: Top 10 Wards Needs and Priorities within the Ward- Community Based Planning Program 2017 (Data Collection)

9. Stakeholders within Ward

The table below illustrates the stakeholders which were engaged with during the Community engagement sessions.

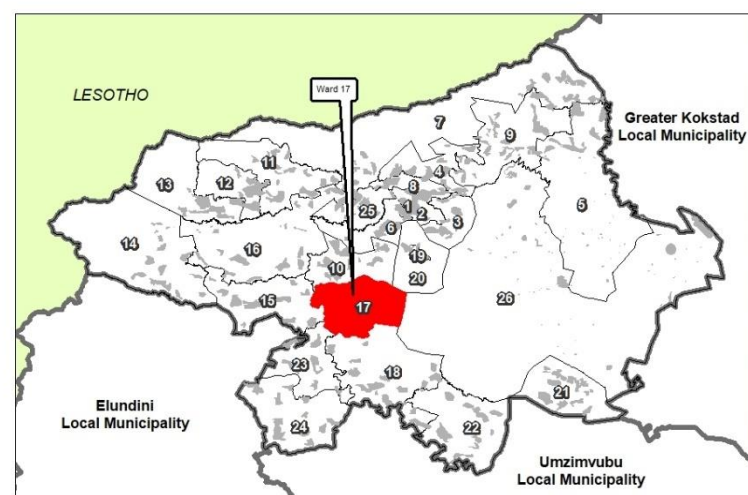
NAME OF STAKEHOLDER	CONTACT PERSON AND TEL
Traditional	073 359 0058
School Governing Boards(SGB)	073 4490 100
Churches	072 674 0950
Association	076 674 4131
Business	076 332 3371
Youth forum	073 071 8335
CPF	079 919 1191

Table 21: Stakeholder within Ward– Community Based Planning Program 2017 (Data Collection)

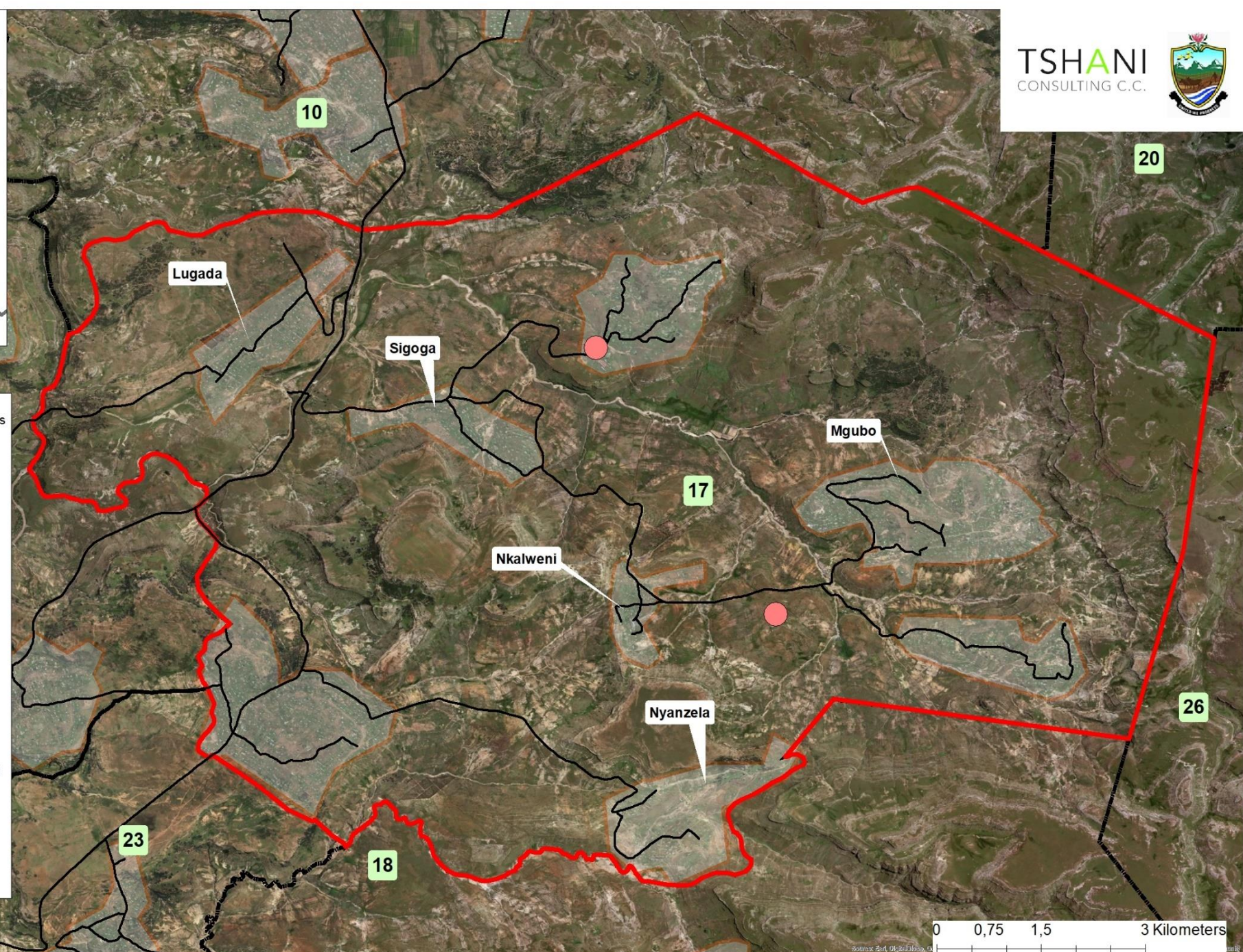
10. Social Challenges

The table below illustrates the social challenges which were identified during the Community engagement sessions.

CHALLENGES IDENTIFIED	AFFECTED AREAS	IMPACT
Alcohol and substance Abuse	All Villages	The rate is high among the youth. Others leave school without completing.
House Breakings	All Villages	It's a common occurrence in all the villages, causing community to live in fear.
Stock Theft	All Villages	Has a bad impact on livestock owners and community as a whole.



- Mgubo**
Foot bridge eDwaleni, Dipping tank, Maintenance of Mgubo access road, RDP Houses
- Mbizeni**
Maintenance of access road and bridge, Water, RDP Houses, assistance with fencing of crop fields. Assistance with the forestry project
- Nkalweni**
RDP houses, Network connection (for mobile devices), Preschool, Access road
- Luxeni**
Water-additional taps needed. Electricity infills, RDP houses, Toilets, Preschool, mobile clinic to come to the village.
- Lugada**
Electricity kwanQodi. Toilets, water, electricity infills. Access road, RDP houses, Dipping tank, sports field, fencing of crop fields. Foot bridge crossing at Kinira for from Lugada.
- Sigoga**
New access road from Sigoga to Silwani. Toilets, water, access road, RDP houses, Preschool, community hall, sports ground
- Mango**
Community hall, RDP houses, Electricity, Clinic, Access road maintenance from Mango to Nyanzela to Polile, A Multipurpose sport ground, water, Network connection (for mobile devices).
- Polile**
Access road, water, toilets.
- Nyanzela**
Nyanzela to Mango access road, water, preschool, shearing shed, RDP houses, community hall.



0 0,75 1,5 3 Kilometers

Date: 26 April 2018

ANALYSIS & WARD PROFILING FOR THE 26 WARDS OF MATATIELE LOCAL MUNICIPALITY

WARD PRIORITY - WARD 17

- Legend**
- IRM
 - Ward 17
 - Wards
 - Settlements
 - Secondary Roads



Source: Eastern Cape Provincial Spatial Development Framework 2017
Matatiele Local Municipality

Limits of Liability and Warranty Disclaimer

This Data is for information purposes only.
No liability shall devolve upon local authority
or its officials through the use thereof.